

Hartfield Crescent Wimbledon, SW19 3SA

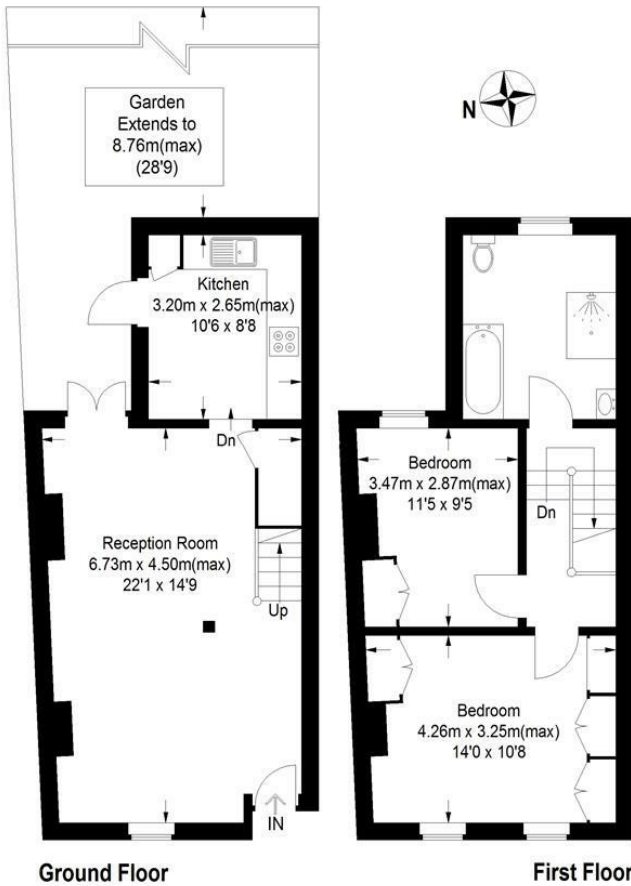
£750,000 Freehold



A well presented, two double bedroom, Victorian family home with no onward chain located moments from Wimbledon town centre and within priority catchment of Dundonald Primary School. This lovely property has lots of character and great potential to extend subject to the usual consents. The bright open plan living/dining area with exposed chimney breasts leads into a beautiful kitchen with access out to a low maintenance pretty garden. Upstairs are two good double bedrooms and a spacious family bathroom.

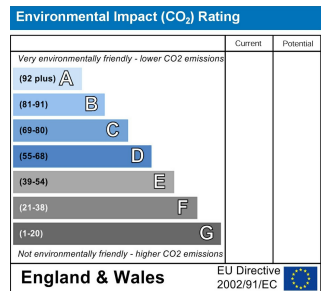
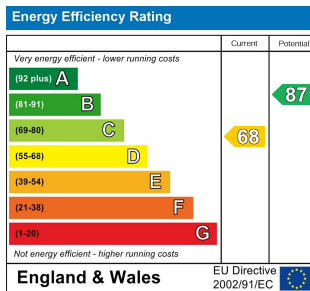
Hartfield Ctescent, SW19

Approximate Gross Internal Area
 Ground Floor = 38.7 sq m / 417 sq ft
 First Floor = 38.7 sq m / 416 sq ft
 Total = 77.4 sq m / 833 sq ft



This floor plan is for representation purposes only and is not drawn to scale. Whilst every attempt has been made to ensure of the accuracy of the plan measurements of doors, windows and rooms are approximate only and should be checked before making any decisions reliant upon them.
 Copyright Bespokeplans.co.uk 2020 (ID658960)

- Victorian Family Home
- Two Double Bedrooms
- Beautiful Kitchen
- Potential to Extend STPP
- No Onward Chain
- Lots of Character
- Priority Catchment to Dundonald School
- Moments from Wimbledon Town Centre
- EPC Rating D



For Free Mortgage Quote and Best Mortgage Rates, call an Ellisons Mortgage Advisor on 020 8944 9494



Although these particulars are believed to be correct, their accuracy is not guaranteed and they do not form part of any contract.

Celebrating 30 years of successful Sales and Lettings in Merton

